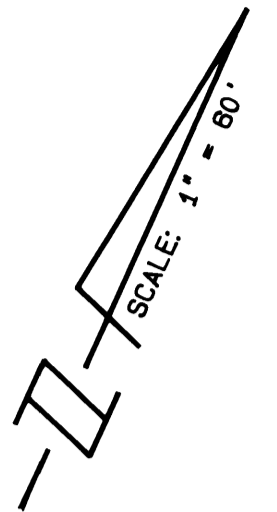


A PLAT OF SABLEWOOD

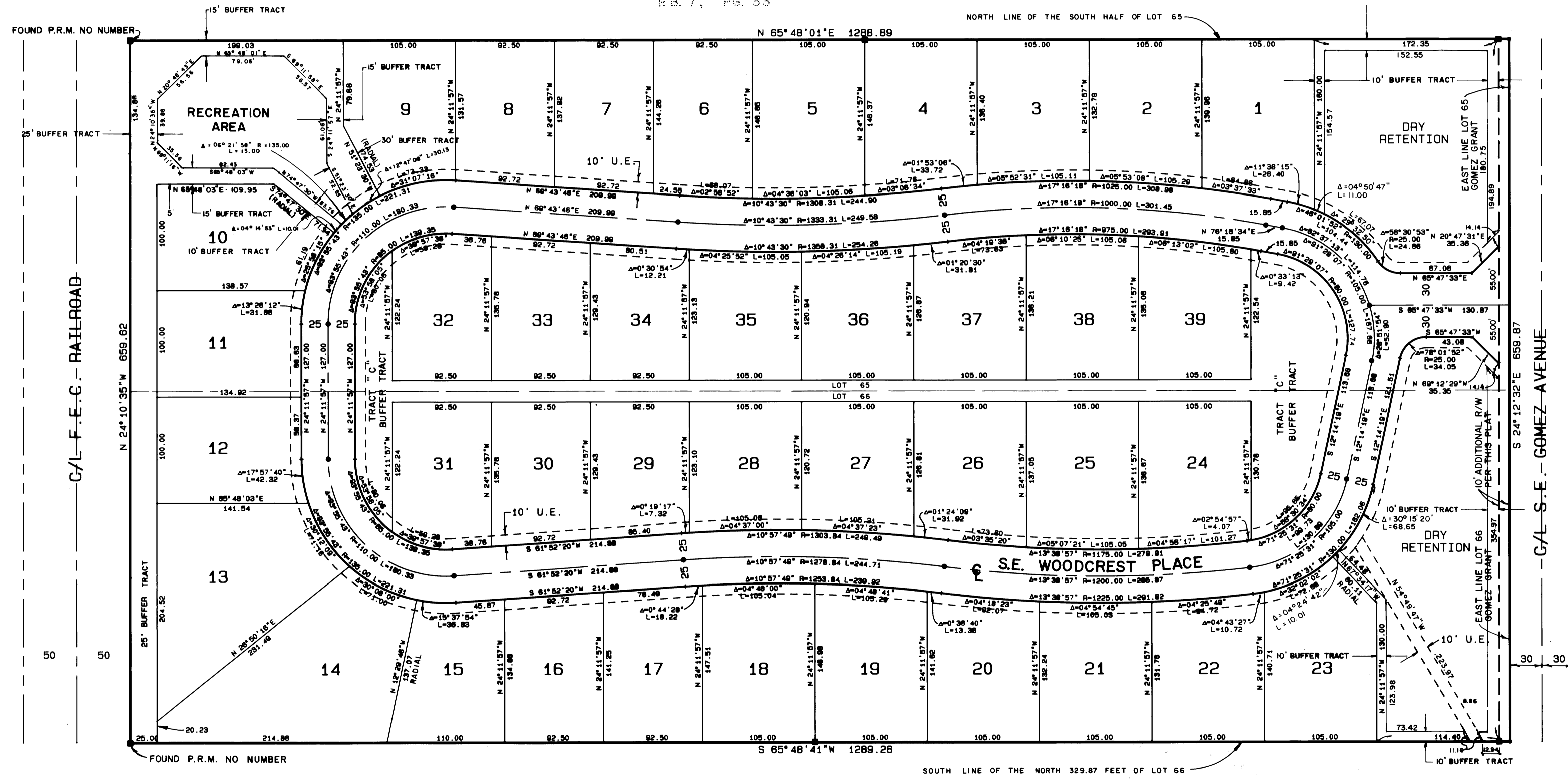
BEING A REPLAT OF A PORTION OF LOTS 65 & 66
IN THE GOMEZ GRANT
MARTIN COUNTY, FLORIDA



SCALE FEET
0 60 120

APRIL, 1988

ORNDORFF MINOR PLAT
R.B. 7, PG. 33



I, MARSHA STILLER, CLERK OF THE CIRCUIT COURT OF MARTIN COUNTY, FLORIDA, HEREBY CERTIFY THAT THIS PLAT WAS FILED FOR RECORD IN PLAT BOOK 11, PAGE 55, MARTIN COUNTY, FLORIDA, PUBLIC RECORDS, THIS DAY OF _____, 1988.

MARSHA STILLER, CLERK CIRCUIT COURT MARTIN COUNTY, FLORIDA.

BY _____
DEPUTY CLERK

FILE NO. _____

(CIRCUIT COURT SEAL)

- LEGEND:
- - DENOTES P.R.M. (PERMANENT REFERENCE MONUMENT) SET
 - - DENOTES P.C.P. (PERMANENT CONTROL POINT)
 - U.E. - DENOTES UTILITY EASEMENT

NOTICE: THERE MAY BE ADDITIONAL RESTRICTIONS THAT ARE NOT RECORDED ON THIS PLAT THAT MAY BE FOUND IN THE PUBLIC RECORDS OF MARTIN COUNTY, FLORIDA

QUAIL RIDGE
R.B. 9, PG 62

NOTE: NO LOT SPLITS EXCEPT TO CREATE LARGER LOTS.

BEARING BASE:
THE EAST LINE OF LOTS 65 AND 66, GOMEZ GRANT, IS TAKEN TO BE S 24° 12' 32" E, AND ALL BEARINGS SHOWN HEREON ARE RELATIVE THERETO.

LINDAHL, BROWNING FERRARI & HELLSTROM, INC. CONSULTING ENGINEERS, PLANNERS & SURVEYORS		2	2
PO BOX 727 JUPITER, FLORIDA 33460	10 CENTRAL PARKWAY SUITE 420 ST. LAZARE, FLORIDA 33497 FORT PIERCE, FLORIDA 33400		